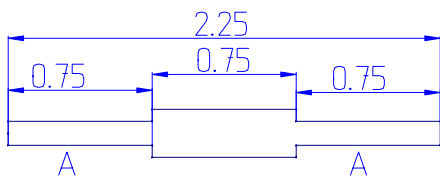


**Frame (2 req'd)**

Aluminum, 1/2" x 1-1/2" x 4-1/8"

Hole "A": Drill 1/4" deep.

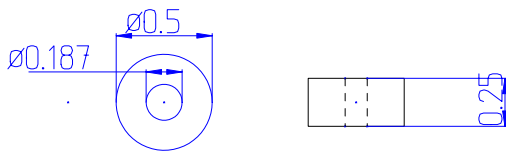
Hole "B": Drill to meet Hole "A".



**Spacer (2 req'd)**

1/4" Brass Round

Turn Area "A" to 0.15 dia.: thread 10-32



**Spacer Nut (2 req'd)**

1/2" Brass Round, knurled



Not to Scale

Not to Scale

Not to Scale

Frame

Spacer

Spacer Nut

Double Wobbler

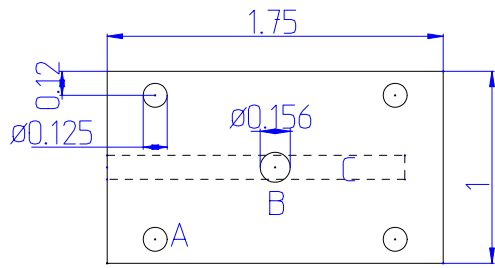
Sheet 1 of 4



David Goodfellow

2/21/04

A



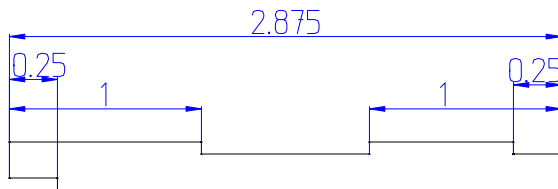
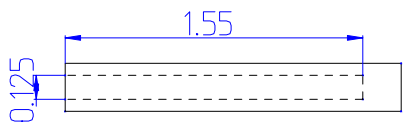
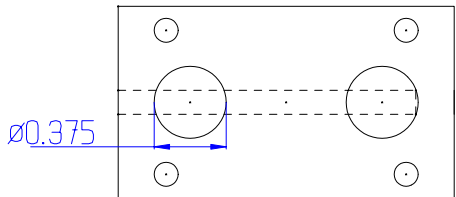
**Manifold (2 req'd)**

Aluminum

Drill Hole "A" through (4 places)

Drill Hole "B" 1/8" to meet Hole "C"

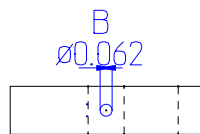
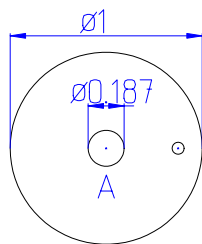
Plug open end of Hole "C"



**Crankshaft**

3/16" Steel Round

Flat depths not critical. Approximately 1/16"



**Crank (2 req'd)**

1" Brass Round

Ream Hole "A" 3/16"

Drill Hole "B" to Hole "A": thread 2-56



Not to Scale

Not to Scale

Not to Scale

Manifold

Crankshaft

Crank

Double Wobbler  
Sheet 2 of 4

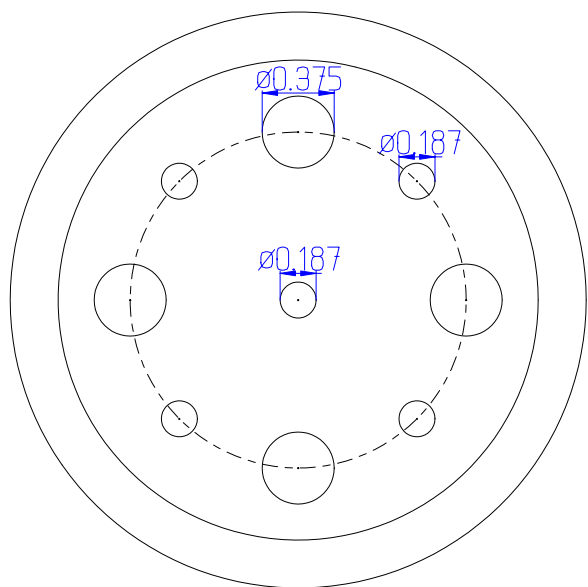


David Goodfellow

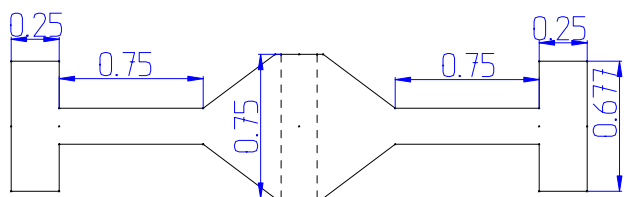
2/22/04

A

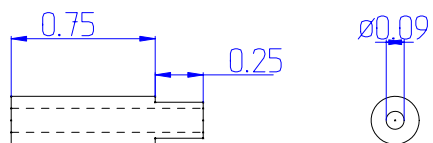





Flywheel  
 3" Aluminum Round  
 Ream center hole 3/16"

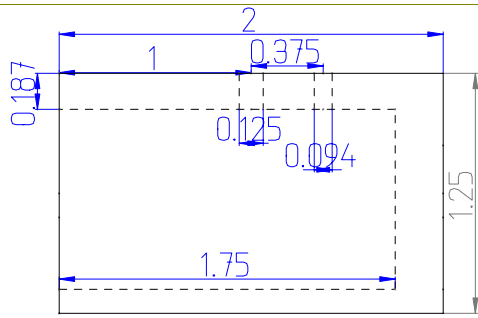


Sheet 3 of 4

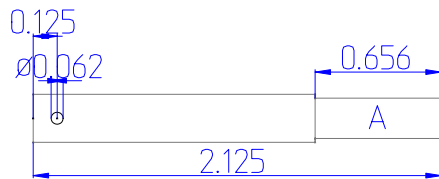
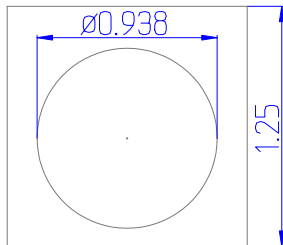


Nipple (2 req'd)

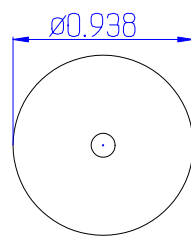
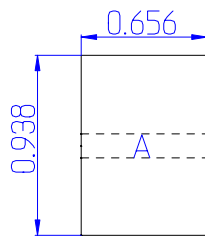
 	Not to Scale	Flywheel	Double Wobbler Sheet 3 of 4
	Not to Scale	Nipple	
	David Goodfellow		2/22/04
			A



Cylinder (2 req'd)  
Aluminum, 1.25" x 1.25" x 2"

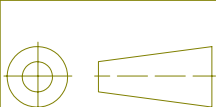


Piston Rod (2 req'd)  
Brass Round, 1/4" x 2-1/8"  
Thread "A" 6-32



Piston (2 req'd)  
Brass Round  
Tap Hole "A" 6-32

Note: Turn a shallow "oil groove" (not shown) at approximate middle of the piston. Mine is 1/8" wide by 1/32" deep.



Not to Scale  
Not to Scale  
Not to Scale

Cylinder  
Piston Rod  
Piston

Double Wobbler  
Sheet 4 of 4



David Goodfellow

2/22/04

A